

Intro

Handwritten musical notation for the Intro section, featuring a single staff with a treble clef, a key signature of one flat, and a 4/4 time signature. The notation includes a series of eighth and sixteenth notes with 'x' marks above them, followed by three measures of a double bar line with a slash through it, indicating a repeat or continuation.

Sloshy

Handwritten musical notation for the Sloshy section, featuring a single staff with a treble clef, a key signature of one flat, and a 4/4 time signature. The notation includes a series of eighth and sixteenth notes with 'x' marks above them, followed by two measures of a double bar line with a slash through it, and a final measure with a double bar line and repeat dots.

Verse

cont groove - tight

Handwritten musical notation for the Verse section, featuring a single staff with a treble clef, a key signature of one flat, and a 4/4 time signature. The notation consists of four measures of a double bar line with a slash through it, indicating a repeat.

Handwritten musical notation for the Verse section, featuring a single staff with a treble clef, a key signature of one flat, and a 4/4 time signature. The notation includes a series of eighth and sixteenth notes with 'x' marks above them, followed by a double bar line with a slash through it.

Sloshy

Handwritten musical notation for the Sloshy section, featuring a single staff with a treble clef, a key signature of one flat, and a 4/4 time signature. The notation consists of four measures of a double bar line with a slash through it, indicating a repeat.

Handwritten musical notation for the Sloshy section, featuring a single staff with a treble clef, a key signature of one flat, and a 4/4 time signature. The notation includes a series of eighth and sixteenth notes with 'x' marks above them, followed by a double bar line with a slash through it.

Chorus

Handwritten musical notation for the Chorus section, featuring a single staff with a treble clef, a key signature of one flat, and a 4/4 time signature. The notation includes a series of eighth and sixteenth notes with 'x' marks above them, followed by three measures of a double bar line with a slash through it, indicating a repeat.

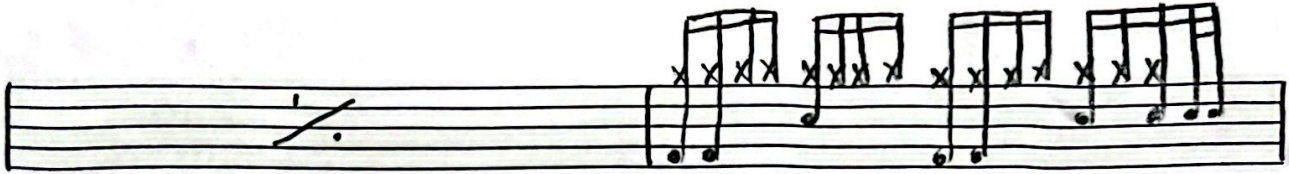
Handwritten musical notation for the Chorus section, featuring a single staff with a treble clef, a key signature of one flat, and a 4/4 time signature. The notation includes a series of eighth and sixteenth notes with 'x' marks above them, followed by a double bar line with a slash through it.

Re-intro

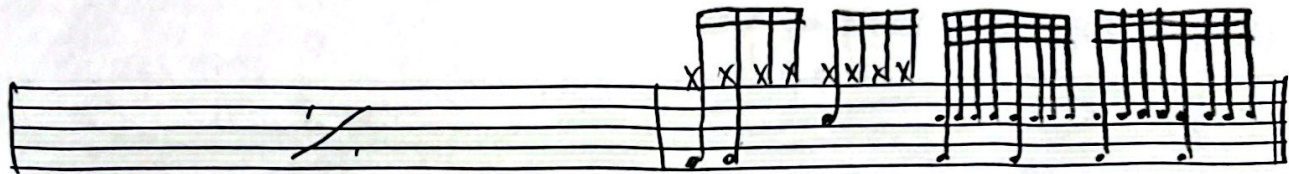
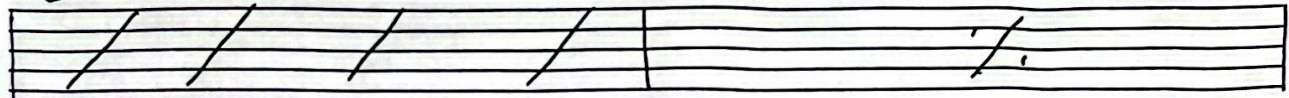
Handwritten musical notation for the Re-intro section, featuring a single staff with a treble clef, a key signature of one flat, and a 4/4 time signature. The notation consists of four measures of a double bar line with a slash through it, indicating a repeat.

Verse 2

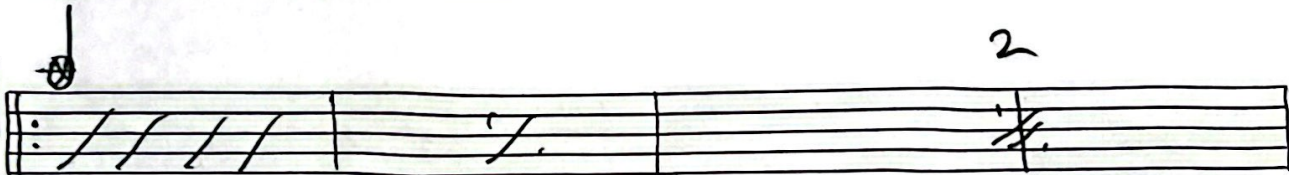
Tight



Sloshy



Chorus

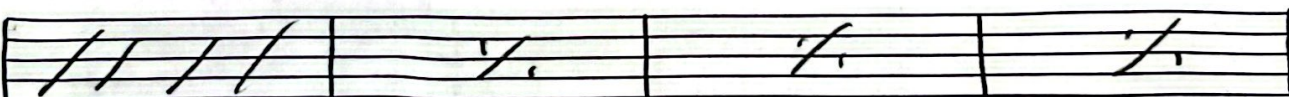


fill

fill

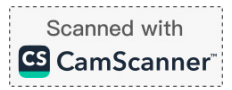
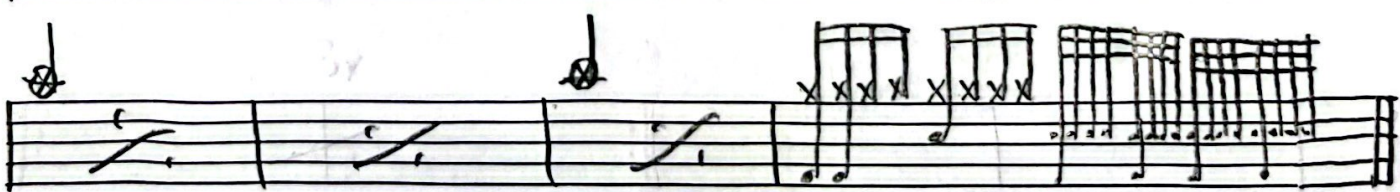
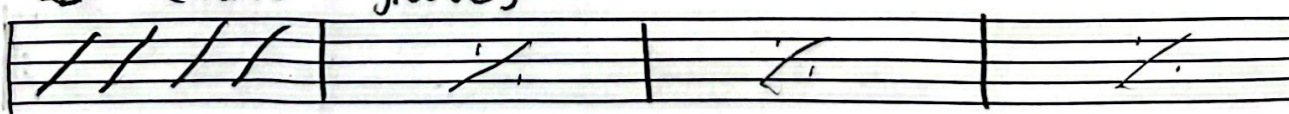


Intro

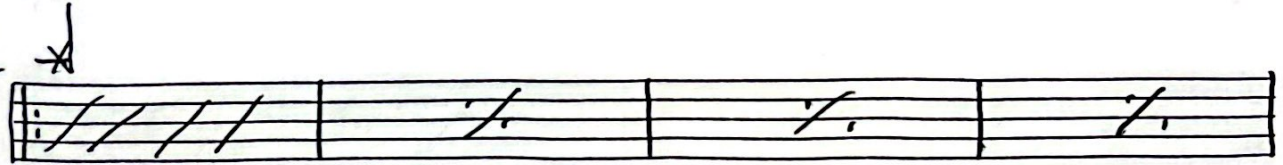


Guit solo

(verse groove)

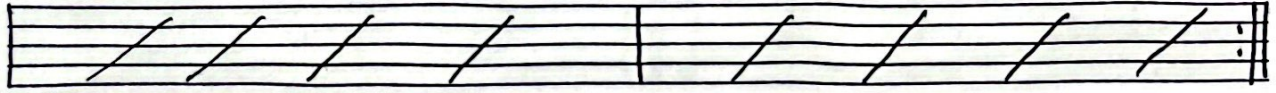


Chorus



fill

fill



2



Outro

(intro)

2

